

Mapping

Vortex Edge offers innovative long-range fixed-wing UAV mapping solution that incorporate with high-resolution camera genuinely specialized for mapping and surveying applications. The overall system has capabilities to collect high-resolution raw aerial images while being efficient in terms of manpower, cost and time.

Plus, the integration of our 2-axis gyro-stabilized gimbal, combined with the smoothness and regularity of the aircraft's flight, allow getting high-quality images that will speed up stitching process which resulted in faster image processing and analysis. The overall system has features and capabilities to solve challenging problems related to forestry, utilities and city planning as well as infrastructure.



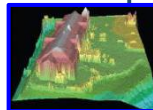
Orthomosaics

Georeferenced, orthorectified 2Dmaps



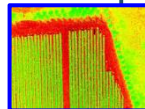
3D Models

Accurate and detailed 3D Models and point clouds in a variety of format



Digital Elevation Models

Easily generate topographic modelling with georeferenced DSM



NDVI, ENDVI Analysis

Advanced algorithms for analysis of crop health and growth performance

Low Cost Mapping Operation

- Few people needed for operation

Autonomous Mapping

- Fully autonomous from takeoff until landing

Practical & Time-saving

- Easy to carry, assemble and operate

Payload Flexibility

- Capable of customizing and integrating any type of payload

Extra-Long Flying Capabilities

- Light-weight system resulted in longer flight time and fewer time to change battery

